

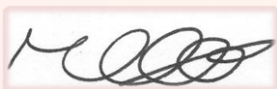
Dear CBA South-East members,

I hope you have had an enjoyable summer and have managed to escape sunburn whilst wielding those trusty trowels. With many excavations, tours, lectures and conferences on offer across the south-east, there is an abundance of activities to keep everybody busy through to the end of 2015. For our part, CBA South-East has just finished a very successful first year of its popular tour schedule, in which we visited current excavations from Roman roadside settlements and Bronze Age barrows, to towns and castles. Next year's schedule is already being finalised for 2016 by our Events Officer and details of this will become available soon, so please do take advantage of this great membership benefit on offer. We are also in the process of structuring training days, the first group of which will focus on regional pottery studies, providing members with valuable skills and knowledge of the highly varied ceramic traditions found regularly across the south from different periods. The first training session will run in early 2016 and we hope that many members also take advantage of these opportunities.

I trust you have all booked your tickets for this year's Conference and Annual General Meeting which will be hosted this year at the fabulous Surrey History Centre in Woking. If you have not already booked but do intend to go, then I would urge you to apply soon as we are almost certain to sell-out before November. Details of the event and booking instructions are available on the website (www.cbasouth-east.org/events/cbase-annual-conference/). The AGM also provides an important forum for all members to engage with the trustees and play an active part in the future running of the group. In fact, we are already in the process of planning both the 2016 and the 2017 annual events, the former of which will be hosted in Kent and will focus on a medieval theme, whilst the 2017 conference marks our 25th Anniversary as an independent CBA regional group and looks certain to be a very special event.

We hope that the new E-letter continues to act as a nice foil for the existing Newsletter, supplying you with the news and information which you need. That said, we are always grateful for any feedback and suggestions you might have on any aspect of our work, so please feel free to get in touch with any of our Trustees (contact details available on the website).

Very best wishes,



Dr Martyn Allen
Chair, CBA South-East



CBA-SE events

Tour 6

Saturday, 19th September 2015

‘Aristocrats of Medieval Surrey’: Woking Medieval and Tudor Palace and Guildford Castle and Town Tour, Surrey

Council for
British Archaeology
South East

**Site and
Town Tours
2015**

Tour 6

‘Aristocrats of Medieval Surrey’
Woking Palace and Guildford Castle Tour, Surrey
Saturday 19th September – 10.30am-4pm



Tour guides:
Richard Savage / Dr Mary Alexander (Surrey Archaeological Society)

Taking in the medieval splendours of aristocratic life in Surrey, this tour will lead around the final season of SyAS and SCAU excavations at Woking Palace, followed by a short drive to Guildford, where we will be learning about the history bound up in the walls of its castle and its relationship with the surrounding town

Tour free for
CBA-SE
members /
£5 for non-
members



Please bring either
a packed lunch or
money for a pub

Visit <http://www.cbasouth-east.org/events/>
for booking details, or email our Events
Officer at events@cbasouth-east.org

Led by Richard Savage (Surrey Archaeological Society) and Dr Mary Alexander (Surrey Archaeological Society), this tour will take in the medieval splendours of aristocratic life in Surrey, starting with the final season of SyAS and SCAU excavations at Woking Palace and, following a short drive to Guildford, learning all about the history bound up in the walls of Guildford Castle and its relationship with its surrounding town.

Free to all CBA-SE members - £5 for non-members. Directions and joining instructions available upon sign-up – please email any queries to our Events Officer at events@cbasouth-east.org or visit <http://www.cbasouth-east.org/events/cbase-tours-and-field-trips/>.

* * 2016 tour schedule to be finalized in the new year * *

Saturday, November 14th 2015

Life in the Mesolithic and new perspectives on the Mesolithic/Neolithic transition Annual Conference

(in association with the Prehistoric Society and Surrey County Archaeology Unit)


Our understanding of the Mesolithic in Britain has increased substantially in recent times due to the considerable contributions made by commercial and community archaeology alongside continued academic attention. This day conference brings together talks from each of these sectors, revealing new discoveries being made on the Mesolithic in the South-East and introducing some of the fascinating insights emerging from projects focussed upon the Mesolithic/Neolithic transition from other areas of the country.

£16.00 for CBA South-East members/£20.00 for non-members – see <http://www.cbassouth-east.org/events/cbase-annual-conference/> for booking details.


Surrey History Centre, 130 Goldsworth Road, Woking, GU21 6ND




Alan Sorrell



CBA South-East Conference:
Life in the Mesolithic and new perspectives on the Mesolithic/Neolithic transition
Surrey History Centre, Woking: Saturday 14th November 2015





Our understanding of the Mesolithic in Britain has increased substantially in recent times due to the considerable contributions made by commercial and community archaeology alongside continued academic attention. This day conference brings together talks from each of these sectors, revealing new discoveries being made on the Mesolithic in the South-East of Britain and introducing some of the fascinating insights emerging from projects focussed upon the Mesolithic/Neolithic transition from other areas of the country.

Arrival and registration	9:30
Dr Martyn Allen (Chair, CBA South-East)	10:15
Introduction to the day	
Professor Martin Bell (University of Reading) - Keynote	10:20
The Mesolithic of the Wetland and Coastal Edge in Southern Britain	
Coffee	11:00
Phil Jones (Surrey County Archaeology Unit)	11:20
Mesolithic Remains at Bletchingley and Mesolithic Surrey	
Garry Momber (Hampshire and Wight Trust for Maritime Archaeology)	11:50
Mesolithic Technology at Bouldnor Cliff: Was it 2,000 Years Ahead of its Time?	
Mike Donnelly (Oxford Archaeology)	12:20
New Mesolithic Discoveries on the Bexhill Relief Road Scheme, Kent	
Lunch and posters	12:50
CBA South East Annual General Meeting	13:30
Dr Fraser Sturt (Uni. Southampton) and Dr Duncan Garrow (Uni. Reading)	14:00
Stepping Stones to the Neolithic: Seafaring, Connectivity and the Mesolithic/Neolithic Transition	
Dr Jodie Lewis (University of Worcester)	14:30
Caves, Springs and Depositing Things: Approaching the Mesolithic and Neolithic in the South West	
Coffee	15:00
Dr Rick Schulting (University of Oxford)	15:30
Violent Times in the Neolithic? A Review of the British Evidence	
Don Henson (University of York)	16:00
Public Engagement in the Mesolithic and Neolithic	
Close	16:30

Tickets

£16.00 for CBA South-East members
£20.00 for non-members

*** Applications for student bursaries are also available ***

For further details and booking information, please visit our website at <http://www.cbassouth-east.org/events/cbase-annual-conference/> or email the organiser, Dr Martyn Allen, at m.g.allen@reading.ac.uk

Conferences and symposiums

Friday, September 4th - Wednesday, 9th 2015 (17:00-)

Association for Industrial Archaeology – **Annual Conference, Sussex 2015**

The Association's conference this year is being organised by a team from Sussex Industrial Archaeology Society led by Malcolm Dawes. On Friday there will be a Seminar on Valuing and Sustaining Britain's Industrial Heritage, which is being put together by our new chairman Keith Falconer.

The main conference will open with a welcome reception and extend from Friday evening to Sunday lunch time. It will include talks by local experts on local industries as well as presentations from our award winners and the Rolt lecture, this year being given by John Minnis. From Sunday afternoon to Wednesday afternoon there will be a series of coach trips to sites of IA interest, with evening talks.

See <http://industrial-archaeology.org/aconf.htm> for booking details.

Falmer Campus, University of Sussex, Brighton, BN1 9RH



Saturday, September 12th 2015 (9:30-16:30)

Wessex Archaeology – **Celebrating Prehistoric Kent**

A conference organised by Mark Williams and David Britchfield from Wessex's London & South East Office which will look at some of the exciting finds from the county as well as featuring displays from other aspects of the heritage of one of the most fascinating counties in Britain.

Tickets £15 – See <http://www.wessexarch.co.uk/upcoming-events-london-se> for details.

Greenwich University, Medway Campus, Central Avenue, Chatham Maritime, Kent ME4 4TB

Saturday, October 3rd 2015 (10:30-16:00)

Surrey Archaeological Society Medieval Studies Forum - Meeting "Village Life" & AGM

This meeting of the Medieval Studies Forum will look at a variety of aspects of village life in the medieval period. Professor Chris Woolgar will look at Food and the Medieval Peasantry while Dr Rupert Gouling, Regional Curator of the National Trust, will talk on the Manor House at Horton Court in Gloucestershire which was created from a Norman hall. The afternoon session will cover lay literacy, 'ordinary' people in Anglo-Saxon Surrey and the manor of Great Bookham in the 17th century. The meeting will finish with the AGM of the Medieval Studies Forum.

The charge is £10 - payable on the day. Those attending are asked to register with Brian Creese (the Meetings Secretary) at bjc@briancreese.co.uk (for full programme see

<http://www.surreyarchaeology.org.uk/content/medieval-studies-forum-meeting-village-life-agm>).

East Horsley Village Hall, Kingston Avenue, East Horsley, KT24 6QT

Saturday, October 17th 2015 (10:00-17:00)

Kent Archaeological Society/Council for Kentish Archaeology –
Investigating the North Coast of Kent

This Joint Study Day is organized by the University of Kent and the Council for Kentish Archaeology (and supported by KAS) and led by Brian Philp, who will talk about Faversham Abbey and the tomb of King Stephen. Among the other speakers will be Gillian Draper who will look at the transformation of the Hundred of Hoo; Richard Taylor who will talk on WWI Defences on the North Kent Coast; Ges Moody who will talk on Thanet's Archaeology.

Tickets £10 to public, cheques payable to CKA. Members of the KAS, Friends of CKA and KAS Subscribers can apply for a FREE pass, s.a.e., please. Available from CKA, 7 Sandy Ridge, Borough Green, Kent TN15 8HP. Details of the programme will be posted on the CKA's website

http://cka.moon-demon.co.uk/cka_index.htm.

Rutherford College, University of Kent, Canterbury, CT2 7NX



Saturday, October 17th 2015

Castle Studies Group Autumn Group –

Rochester castle and the great siege of 1215

The Castle Studies Group has organised a conference to explore the construction, design and history of Rochester Castle and Cathedral as well as the events of the year and the castle's later history. On Friday (afternoon), papers will be presented by Jeremy Ashbee, Pamela Marshall, John Goodall, Tim Tatton-Brown, Richard Eales, Peter Purton and James Petre.

Cost: £60 per delegate (various discounts available). For further details about the event including advice about accommodation (if required), contact Peter Purton (ppurton@tiscali.co.uk) or see

<http://www.castlestudiesgroup.org.uk/page26.html>

The Guildhall, High Street, Rochester, ME1 1PY

Saturday, October 24th 2015 (10:00-17:00)

Kent Historic Buildings and Industrial Archaeology conference – **Past Industries of Kent and Relevant Buildings**

Kent's Anglo-Saxon heritage, historic houses and industrial archaeology will be the themes and will include talks by Maureen Green on Hayle Mill, Maidstone and by Sue Harris on the restoration of the grounds of Quex Park, Birchington. After the talks there will be presentations on Blue Town's former Victorian music hall and the history of Blue Town, followed by a tour of the area.

Tickets for the conference cost £20, including light lunch and refreshments. For a booking form email mike@mikeclinch.co.uk or download from www.kentarchaeology.org.uk.

Bluetown Heritage Centre, 69 High Street, Bluetown, Sheerness, ME12 1RW

Saturday, October 31st 2015 (10:00-17:00)
Kent Archaeological Society conference –
Anglo-Saxon Kent: old and new discoveries



Conference will include talks by KAS curator Dr Andrew Richardson on the society's collection of 'finds' of that period; Keith Parfitt on settlements in the Dover area and on the east Kent downs; Ges Moody on his research into where St Augustine and his missionaries landed in Thanet; Dr Andrew Richardson and Dana Goodburn Brown of Conservation Science Investigations (CSI) on The Meads Cemetery, Sittingbourne; Dr Gabor Thomas and Dr Alexandra Knox on discoveries at Lyminge; and Alison Taylor on St Peter's Cemetery, Thanet. Among the 'finds' that will be featured are iron 'grave goods' from Anglo-Saxon cemeteries at Sarre and Patrixbourne, discovered more than 140 years ago during one of the KAS's first 'digs'.

Tickets cost £20 (KAS members £15) – price includes tea/coffee. Download a booking form from www.kentarchaeology.org.uk or email membership@kentarchaeology.org.uk for full details.

Rutherford College, University of Kent, Canterbury, CT2 7NX

Lectures and talks

Monday, September 14th 2015 (19:30-21:00)
Lewes History Group – **The Portable Antiquities Scheme in the Lewes area**

Talk by Stephanie Smith, Finds Liaison Officer for East and West Sussex.

Non-members welcome £3 (£2 members).

The King's Church building, Brooks Road, Lewes, BN7 2BY

Wednesday, September 23rd 2015 (19:00)
Great Hall Lecture, Knole – **Building an Archbishop's palace in fifteenth-century England**

Jonathan Foyle, presenter of BBC4's *Henry VIII: Patron or Plunderer* and of the Knole interpretation film, explains some striking new discoveries that illuminate the art and politics of Knole's founding era.

Tickets £15 – Book online at <http://www.nationaltrust.org.uk/knole/things-to-see-and-do/events/>
Great Hall, Knole, Sevenoaks, Kent, TN15 0RP



Wednesday, September 23rd 2015 (19:30-21:00)
Chichester & District Archaeological Society – **The
Forgotten Wrecks of the First World War**

Talk by Stephen Fisher – £3 payable by non-members at the door.
New Park Centre, New Park Road, Chichester, PO19 7XY



Monday, September 28th 2015 (19:15)
Isle of Thanet Archaeological Society –
Antoinette Powell Cotton

Talk by Hazel Basford – free to members; £3 to non-members
Lecture Hall, Crampton Tower Yard, Broadstairs, CT10 2AB

Tuesday, September 29th 2015 (19:30-21:30)
Surrey Industrial History Group – **Sussex Industrial History: a different
approach**

Talk by Dr Geoffrey Mead, University of Sussex. Start of the 40th Series of Industrial Archaeology
Lectures in Guildford Autumn 2015.

£5, payable on night – enquiries to Bob Bryson, 01483 577809, meetings@sihg.org.uk.
The Education Centre, The Cathedral, Stag Hill, Guildford, GU2 7UP

Thursday, October 1st 2015 (10:00-12:00)
Surrey Industrial History Group – **18(B) Squadron
(Chinook) Falklands War**

Talk by Ian Ivory, Ex 18(B) Squadron Pilot. Start of the Surrey Industrial
History Group Leatherhead lecture series Autumn 2015.

£5, payable on the day, but please contact Bob Bryson, 01483 577809, meetings@sihg.org.uk as
seating is strictly limited.

Room G6, The Institute, 67 High Street, Leatherhead, KT22 8AH



Friday, October 2nd 2015 (19:30)
Centre for Research in Kent History and Archaeology with Wye Historical
Society – **The Battle of the Ducks' and other episodes from the 'Kentish
Tithe War', 1930–36**

Fourth Nightingale Memorial Lecture by Dr John Bulaitis (Canterbury Christ Church University).
Wine reception from 7.00pm – all welcome **Free entry** (voluntary retiring collection).

Old Sessions House, Longport, Canterbury Christ Church University, Canterbury, CT1 1QU

Tuesday, October 6th 2015 (19:30-21:30)

Surrey Industrial History Group – The Archaeology of Early Steam Locomotives

Talk by Dr Michael Bailey, President of the Stephenson Locomotive Society.

£5 payable on night. Enquiries to Bob Bryson, 01483 577809, meetings@sihg.org.uk.

The Education Centre, The Cathedral, Stag Hill, Guildford, GU2 7UP



Tuesday, October 6th 2015 (19:30-21:00)

Surrey Archaeological Society Roman Studies Group – AGM and talk by Professor John Hines: The coming of the Saxons to Surrey - older and newer perspectives

Professor John Hines will be talking about the early Saxon period in Surrey generally, matters of the Roman-Saxon transition in a wider south-eastern context, and the practicalities of identifying and dating contact and overlap in the archaeological record. Surrey is well placed to contribute to study of this fascinating but still poorly understood period. We need to consider ways in which the Society can foster a greater understanding of the ways in which Roman Britain became Saxon England in our future research and this talk will be a great spur to that process.

See <http://www.surreyarchaeology.org.uk/content/agm-and-talk-by-professor-john-hines-the-coming-of-the-saxons-to-surrey-older-and-newer> for more details.

The Institute, 67 High Street, Leatherhead, KT22 8AH

Thursday, October 8th 2015 (10:00-12:00)

Surrey Industrial History Group – The Construction of Gothic Cathedrals

Talk by Douglas Irvine, Structural Engineer.

Single lectures £5, payable on the day, but please contact Bob Bryson, 01483 577809, meetings@sihg.org.uk as seating is strictly limited.

Room G6, The Institute, 67 High Street, Leatherhead, KT22 8AH

Friday, October 9th 2015 (19.30)

Brighton and Hove Archaeological Society – Hillforts of the western Weald

Talk by Judie English – free entry for members, £3 to non-members.

Unitarian Church, New Road, Brighton, BN1 1UF



Tuesday, October 13th 2015 (19.30)

Worthing Archaeological Society – Summer Dig at St.Nicholas Gardens, Angmering

Con Ainsworth Memorial Lecture by Peter Brannlund and Amie Friend – coffee and wine after the lecture

Lecture Theatre, Worthing Library, Worthing, BN11 1HD



Thursday, October 15th 2015 (10:00-12:00)

Surrey Industrial History Group – The Work of Surrey History Centre

Talk by Di Stiff, Collections Development Archivist.

Single lectures £5, payable on the day, but please contact Bob Bryson, 01483 577809, meetings@sihg.org.uk as seating is strictly limited.

Room G6, The Institute, 67 High Street, Leatherhead, KT22 8AH

Thursday, October 22nd 2015 (10:00-12:00)

Surrey Industrial History Group – The Ramblings of a Railwayman

Talk by Geoff Bunch, ex Railwayman.

Single lectures £5, payable on the day, but please contact Bob Bryson, 01483 577809, meetings@sihg.org.uk as seating is strictly limited.

Room G6, The Institute, 67 High Street, Leatherhead, KT22 8AH

Thursday, October 22nd 2015 (19:00)

University of Sussex Archaeological Society – An illustrated archaeological talk from the 1920s: the first excavation of the Ashted Common Roman villa (Surrey), with a summary of the results of the recent excavations

Lecture by Dr David Bird, Surrey Archaeological Society.

£2 Members, £3 Non-Members – just turn-up (no booking required)

Fulton Building, Lecture Theatre A, University of Sussex, Brighton BN1 9RH



Tuesday, October 27, 2015 – 19:30-21:30

Surrey Industrial History Group – History of Roads in Britain

Talk by Douglas Irvine, Civil Engineer.

£5, payable on the night. Enquiries to Bob Bryson, 01483 577809, meetings@sihg.org.uk.

The Education Centre, The Cathedral, Stag Hill, Guildford, GU2 7UP

Wednesday, October 28th 2015 (19:30-21:00)
Chichester & District Archaeological Society –
Excavations at Medmerry; The Final Report

Talk by Kristina Krawiek – £3 payable by non-members at the door.
New Park Centre, New Park Road, Chichester, PO19 7XY



Thursday, October 29th 2015 (10:00-12:00)

Surrey Industrial History Group – **Aero Engines and Rocket Propulsion**

Talk by Jim Smith, ex Director Fraser Nash.

£5 payable on day, but please contact Bob Bryson, 01483 577809,
meetings@sihg.org.uk as seating is strictly limited.

Room G6, The Institute, 67 High Street, Leatherhead, KT22 8AH

Thursday, October 29th 2015 (19:15)

Isle of Thanet Archaeological Society – **Diving on the Goodwins**

Talk by Bob Peacock – £3 to members; £5 to non-members

Broadstairs Campus, Christ Church University, Northwood Road, Broadstairs, CT10 2WA

Tuesday, November 3rd 2015 –(9:30-21:00)

Surrey Archaeological Society Roman Studies Group –
Report back on RSG projects: Flexford and Abinger 2015

Hear the latest on 2015 fieldwork at Flexford and Cocks Farm Roman villa, Abinger.

See <http://www.surreyarchaeology.org.uk/content/report-back-on-rsg-projects-flexford-and-abinger-2015> for more details.

The Institute, 67 High Street, Leatherhead, KT22 8AH



Monday, November 9th 2015 (19:30-21:00)

Lewes History Group – **Old Walls, Wellies and Wasps – Recent Archaeological Work at Lewes Priory**

Talk by Simon Steven, Archaeology South-East

Non-members welcome £3 (£2 members).

The King's Church building, Brooks Road, Lewes, BN7 2BY



Tuesday, November 10th 2015 (10:00-12:00)

Surrey Industrial History Group – The Vickers Viscount

Talk by John Caton, Transport enthusiast.

Single lectures £5, payable on the day, but please contact Bob Bryson, 01483 577809, meetings@sihg.org.uk as seating is strictly limited.

Room G6, The Institute, 67 High Street, Leatherhead, KT22 8AH



Tuesday, November 10th 2015 (19.30)

Worthing Archaeological Society – Living with the Uffington White Horse

Gary Lock, Emeritus Professor of Archaeology at the University of Oxford, will talk on the Hillforts of the Ridgeway project.

Lecture Theatre, Worthing Library, Worthing, BN11 1HD

Tuesday, November 10th 2015 (19:30-21:30)

Surrey Industrial History Group – Agricultural Steam Mechanisation

Talk by Dr Jane McCutchan, University of Reading.

Single lectures £5, payable on the night. Enquiries to Bob Bryson, 01483 577809, meetings@sihg.org.uk.

The Education Centre, The Cathedral, Stag Hill, Guildford, GU2 7UP

Thursday, November 12th 2015 (10:00-12:00)

Surrey Industrial History Group – Railway Electrification

Talk by Peter Bosomworth, Engineer, SIHG.

Single lectures £5, payable on the day, but please contact Bob Bryson, 01483 577809, meetings@sihg.org.uk as seating is strictly limited.

Room G6, The Institute, 67 High Street, Leatherhead, KT22 8AH



Tuesday, November 17th 2015 (19:30-21:30)

Surrey Industrial History Group – Tunnelling in the 1740s

Talk by Dr Bryan Lawton, Newcomen Society.

Single lectures £5, payable on the night. Enquiries to Bob Bryson, 01483 577809, meetings@sihg.org.uk.

The Education Centre, The Cathedral, Stag Hill, Guildford, GU2 7UP

Thursday, November 19th 2015 (10:00-12:00)
Surrey Industrial History Group – **150 Years of London Underground**



Talk by Mark Ovenden, Transport consultant.

Single lectures £5, payable on the day, but please contact Bob Bryson, 01483 577809, meetings@sihg.org.uk as seating is strictly limited.

Room G6, The Institute, 67 High Street, Leatherhead, KT22 8AH

Thursday, November 19th 2015 (19:00)
University of Sussex Archaeological Society – **How the other half lived: an introduction to the Rural Settlement of Roman Britain Project**

The Sally Christian Lecture by Dr Martyn Allen, University of Reading (lecture followed by wine reception).

£2 Members, £3 Non-Members – just turn-up (no booking required)

Fulton Building, Lecture Theatre A, University of Sussex, Brighton BN1 9RH

Wednesday, November 25th 2015 (19.30-21.00)
Chichester & District Archaeological Society – **Limeburners, Lords and Labourers**



Talk by Richard Howell – £3 payable by non-members at the door.
New Park Centre, New Park Road, Chichester, PO19 7XY



Thursday, November 26th 2015 (10:00-12:00)
Surrey Industrial History Group – **The Merchant Navy in Wartime**

Talk by Richard Mellor, Maritime Carrier Shipping UK Ltd.

Single lectures £5, payable on the day, but please contact Bob Bryson, 01483 577809, meetings@sihg.org.uk as seating is strictly limited.

Room G6, The Institute, 67 High Street, Leatherhead, KT22 8AH

Events

Saturday, September 5th, Sunday, September 20th, Saturday, October 3rd
& Sunday, October 18th, 2015 (14:00 start)

Winchelsea Archaeological Society – Under Winchelsea cellar tours

Winchelsea boasts more than 50 medieval cellars, most of which are vaulted and were built around 1290-1300, at the same time as the town. Winchelsea Archaeological Society (WAS) conducts tours of the cellars. Find out why and how they were built, and also learn something of the history of the Ancient Town and Cinque Port of Winchelsea.

The cost is £5 and includes a guidebook to the cellars. All tours start at 14:00 on Castle Street. Proceeds go to WAS to new archaeology.

Enquiries and reservations to 01797224446 or tours@winchelsea.net.

Castle Street, Winchelsea, East Sussex TN36 4EL



Friday, September 18th to Sunday September 20th 2015

Bentley Woodfair 2015

Woodfair is a celebration of woodlands, forestry, timber, trees woodcrafts and much more. The whole site holds two fields of stands, exhibits and displays and an amazing woodland full of demonstrations and activities. SSA will also be hosting the archaeology section at the 20th Bentley Woodfair at Bentley Country Park this Autumn. This event will enable the SSA with a platform to provide some 'hands on' archaeological activities for children and adults.

Adults £14 – Senior citizen £12 – Children (3-15 years) £10 –

Family Ticket (2 adults plus up to 3 children) £49

Bentley Country Park, Halland, East Sussex BN8 5AF



Saturday, September 26th 2015 (14:00)

Kent Archaeological Society – Visit to Minster Abbey and Minster Church

Meet at 13.45 for 14.00 at Minster Abbey, Thanet. Then cross the road to St Mary the Virgin Church for 1500 where tea will be provided.

The cost of the visit is £8 to include tea and biscuits. Please register by e-mailing or telephoning the Churches Visits Secretary, Jackie Davidson (Jacalyn.davidson@BTInternet.com or 01634 324004).

Minster Abbey, Church Street, Minster, Thanet, CT12 4BX

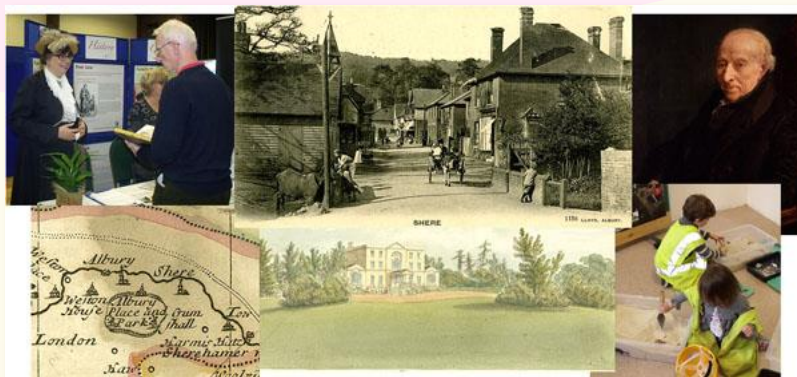


Saturday, October 3rd 2015 (12:00-16:00)

Surrey Heritage – Surrey Heritage Showcase 2015 in Shere

This year's event will focus on Shere, Gomshall, Peaslake and Albury and will be our fourth Heritage Showcase in the county which brings together not only the experts and amazing resources held at Surrey History Centre, but also local organisations and societies to showcase the heritage of the area. Highlights for the day include: using the HER map to record memories of Shere and the surrounding area; – using the Historic Environment Record map your memories of the area with this interactive display; family history advice and help with dating old photos; 'Ask the expert' sessions; free children's activities; displays from the County's archive; book sale, etc. Free for all. See <http://www.exploringsurreypast.org.uk/showcase/> for more info.

Shere Village Hall, Gomshall Lane, Shere, Guildford, GU5 9HE



Saturday, October 24th 2015 (10:00-16:00)

Lewes Priory Trust – Eat, Drink and be Merry Study Day

Join us on our archaeological and historical exploration of food and drink, answering such questions as: Are fat monks myth or fact? What can their skeletons tell us about their diet? How did dining etiquette and table manners compare to ours today? What light do illuminated manuscripts throw on the cycle of food production? What can we discover more about monastic brewing, brew? houses and priory ale? Speakers include Dr Cathy Oakes (University of Oxford), Dr Pip Patrick (University College, London), Andrew Davison (Historic England), Dr Laura Jacobus (Birkbeck College, University of London).

Full price adult ticket £15 – concessionary ticket price £10 (Lewes Priory Trust members, students, retired, those on benefits, job seekers). Please see

http://www.lewespriory.org.uk/?location_id=446 for more information.

St John The Baptist Church, Cockshut Road, Southover, Lewes BN7 1JH



Courses

Saturday, September 5th 2015 (10:00-16:00)

Sussex School of Archaeology – **Flesh on the Bones**

Course by Rob Symonds. £40 (£35 for Friends of SSA and members of SAS) – see

<http://www.sussexarchaeology.org/#!autumn-term-2015/c23ub> for more details

Fishbourne Roman Palace, Roman Way, Fishbourne, West Sussex, PO19 3QR

Saturday, September 5th 2015 (10:00-16:00)

Canterbury Archaeological Trust – **First Steps in Archaeology (1)**

Course by Andrew Richardson. £40 (£35 for Friends of CAT) – for more details see

http://www.canterburytrust.co.uk/community_archaeology/archaeology-courses/

Canterbury Archaeological Trust, 92a Broad Street, Canterbury, Kent CT1 2LU

Saturday, September 12th 2015 (10:00-16:00)

Sussex School of Archaeology – **An Introduction to Prehistoric Flint Work**

Course by Chris Butler. £40 (£35 for Friends of SSA) – see

<http://www.sussexarchaeology.org/#!autumn-term-2015/c23ub> for more details

Mays Farm, Selmeston, Polegate, East Sussex BN26 6TS



Saturday, September 19th 2015 (10:00-16:00)

Sussex School of Archaeology – **Site Interpretation for Archaeologists**

Course by Luke Barber. £40 (£35 for Friends of SSA) – see

<http://www.sussexarchaeology.org/#!autumn-term-2015/c23ub> for more details

Tidemills, near Newhaven, East Sussex BN9

Saturday, September 19th 2015 (10:00-16:00)

Canterbury Archaeological Trust – **Caesar to Claudius: Britain, Gaul and Rome from 55 BC to AD 43**

Course by Jane Weekes and Andrew Richardson. £40 (£35 for Friends of CAT) – for more details see http://www.canterburytrust.co.uk/community_archaeology/archaeology-courses/

Canterbury Archaeological Trust, 92a Broad Street, Canterbury, Kent CT1 2LU

Saturday, October 3rd 2015 (10:00-16:00)

Sussex School of Archaeology – **Palaeolithic Ritual in Britain**

Course by Steve Patton. £40 (£35 for Friends of SSA) – see <http://www.sussexarchaeology.org/#!autumn-term-2015/c23ub> for more details

Mays Farm, Selmeston, Polegate, East Sussex BN26 6TS



Sunday, October 10th 2015 (10:00-16:00)

Sussex School of Archaeology – **From Cowrie Shell to Credit Card: The History of Money**

Course by David Rudling. £40 (£35 for Friends of SSA and members of SAS) – see <http://www.sussexarchaeology.org/#!autumn-term-2015/c23ub> for more details

Fishbourne Roman Palace, Roman Way, Fishbourne, West Sussex, PO19 3QR

Saturday, October 17th 2015 (10:00-16:00)

Sussex School of Archaeology – **Hunter Gatherer Society in Prehistoric Britain**

Course by Chris Butler. £40 (£35 for Friends of SSA and members of SAS) – see <http://www.sussexarchaeology.org/#!autumn-term-2015/c23ub> for more details

Fishbourne Roman Palace, Roman Way, Fishbourne, West Sussex, PO19 3QR

Saturday, October 17th 2015 (10:00-16:00)

Canterbury Archaeological Trust – **Roman Pottery in East Kent**

Course by Andrew Savage. £40 (£35 for Friends of CAT) – for more details see http://www.canterburytrust.co.uk/community_archaeology/archaeology-courses/

Canterbury Archaeological Trust, 92a Broad Street, Canterbury, Kent CT1 2LU

Saturday, November 7th 2015 (10:00-16:00)

Sussex School of Archaeology – **Wetland Archaeology the South-East**

Course by Mike Allen. £40 (£35 for Friends of SSA) – for more details see <http://www.sussexarchaeology.org/#!autumn-term-2015/c23ub>

Mays Farm, Selmeston, Polegate, East Sussex BN26 6TS



Saturday, October 17th 2015 (10:00-16:00)

Canterbury Archaeological Trust – **Crash Course in Roman Britain**

Course by Jake Weekes. £40 (£35 for Friends of CAT) – for more details see

http://www.canterburytrust.co.uk/community_archaeology/archaeology-courses/

Canterbury Archaeological Trust, 92a Broad Street, Canterbury, Kent CT1 2LU

Saturday, November 14th 2015 (10:00-16:00)

Sussex School of Archaeology – **Bronze Age and Iron Age Ritual**

Course by Steve Patton. £40 (£35 for Friends of SSA) – see

<http://www.sussexarchaeology.org/#!autumn-term-2015/c23ub> for more details

Mays Farm, Selmeston, Polegate, East Sussex BN26 6TS



Saturday, November 21st 2015 (10:00-16:00)

Sussex School of Archaeology – **Recording and Analysis of Prehistoric Flintwork**

Course by Chris Butler. £40 (£35 for Friends of SSA) – see

<http://www.sussexarchaeology.org/#!autumn-term-2015/c23ub> for more details

Mays Farm, Selmeston, Polegate, East Sussex BN26 6TS



Saturday, October 17th 2015 (10.00-16.00)

Canterbury Archaeological Trust – **Archaeology of the Kingdom of Kent**

Course by Andrew Richardson. £40 (£35 for Friends of CAT) – for more details see

http://www.canterburytrust.co.uk/community_archaeology/archaeology-courses/

Canterbury Archaeological Trust, 92a Broad Street, Canterbury, Kent CT1 2LU

Excavation and research opportunities

Kent Archaeological Society – Allen Grove Local History Grants 2015

Kent's local, social and family history enthusiasts have until 31 March 2016 to apply for the next tranche of grants to be awarded by the Kent Archaeological Society from its Allen Grove Local History Fund. Amounts of up to £1,000 are offered annually to individuals, groups, organizations and students to help cover the cost of research, publications, exhibitions and other projects focused on the county's history and heritage.

Application forms can be downloaded from www.kentarchaeology.org.uk or obtained by email from allengroveadmin@kentarchaeology.org.uk or by post from the KAS c/o 8 Woodview Crescent, Hildenborough, Tonbridge, Kent TN11 9HD (please enclose a s.a.e.). See [Allen Grove Local History Fund Grants, 2015](#) for more details.

Saturday, October 17th and Sunday, October 18th, 2015 / Tuesday,
October 6th to Sunday, October 11th, 2015

Surrey County Archaeological Unit – Surveying and Excavating at Witley Camp

SCAU are looking for volunteers to help do a walkover survey and excavate at a military camp just off the A3 near Thursley that was in use during the First and Second World War. On the surveying weekend (17th-18th) small groups will be provided with a handheld GPS and old maps of the site. They will be given areas to cover and try to find any remaining structures from the First or Second World War at the site.

Booking is essential and you will need to be able to get to the site using your own transport/car share. SCAU is looking for civilians, veterans, and those currently serving in the armed forces. If you would like to book, please email Hannah Potter at education.scau@surreycc.gov.uk and state if you are military or civilian, what dates you would like and how much experience you have.

Please email any events, talks, recent publications relevant to the south-east, or fieldwork opportunities to events@cbasouth-east.org

Next e-letter will be issued approximately on **October 31st** – please send any November, December or January info by **October 30th**

Keep up-to-date on the website www.cbasouth-east.org/ and follow us on

 www.facebook.com/CBASouthEast and  [@CBASouthEast](https://twitter.com/CBASouthEast)